

Welcome Back to École Luxton School

September 2020



We are so happy to see you!



The end of last school year was very challenging due to COVID-19. We miss being together and are looking forward to seeing you soon.

The following slides will help you understand the new safety rules at École Luxton School. Much of school will look the same, but we do have some changes. These changes were created to help keep everyone safe and follow both Winnipeg School Division and provincial recommendations. All staff will be trained on these new protocols prior to school opening for students.

As always we will be flexible to adapt as per current provincial guidance and protocols.

Before school: role of families



- Caregivers must prescreen their child/children to ensure they are not exhibiting any COVID-19 symptoms. Any student who is exhibiting symptoms must stay home.
- See this link for the screening tool:
<https://sharedhealthmb.ca/covid19/screening-tool/>
- Your medical provider or Healthlinks can provide you with more information.
- Pack a water bottle with your snacks and lunch(if you have registered for lunch program), as our fountains are currently not in use.
- Students in Grades 4,5 and 6 must wear a mask when distancing is not possible. They should put it on when they arrive, and, if possible, have a spare. Younger students may wear masks, but are not required.
- Make sure your child has appropriate outdoor clothing for the day.

Arriving at School



- Students should arrive no earlier than 8:45 am.
- Students will line up at their assigned doors as they arrive, maintaining social distancing guidelines as shown.
- Students will be welcomed at the assigned entrance by a staff member. They will be screened for symptoms, and will be provided with hand sanitizer.
- Parents/Caregivers will not be permitted inside the school without an appointment, until further notice.

Late Drop Offs/ Early Pick Ups



Early Pick Up

- Please call the office and let Mary or Arlene know if your child/children need to be picked up early so we can have them ready. 204-589-4368.
- Once you arrive please call the office and a staff member will ensure a safe meet up outside of the school.

Late Drop Off

- Cohort entrance and exit doors will be locked at 9:00.
- If your child arrives at school after 9:00 they will have to come to the main doors on Polson Ave.
- A staff member will greet them there, and ensure that they sanitize their hands before proceeding to the office.

Assigned Doors for Entry and Exit



- Rooms 8, 15, 16 will use the main Polson Ave. doors.
- Rooms 13, 9, and 11 will use the West Polson Ave. doors.
- Rooms 26, 25, 12 will use the gym doors on Polson Ave.
- Rooms 27, 18 will wait on the field side of the school and enter through the back door near the field.
- N/K , Links, and LAC classes will enter through the main Polson Ave. doors.

Classroom Environment



- Some modifications to classrooms are necessary in order to keep everyone safe.

These include:

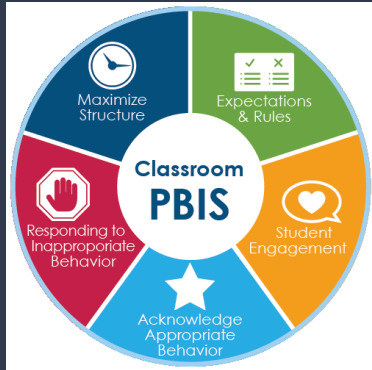
- Physical distance in seating plans.
 - Students will have a designated seat in the classroom.
 - Each student will receive their own set of school supplies. Supplies will not be shared.
 - Students home belongings will be stored separately.
 - Students will take regular breaks to wash or sanitize hands.
-
- Music, Physical Education and classroom teachers will conduct classes outside when possible. Students will not be singing together.
-
- Please ensure your child is dressed appropriately for the weather at all times.

Washrooms



- Students should only enter the main floor washroom one at a time.
- In the basement, designated stalls and sinks will be taped off, in order to ensure physical distancing.
- Students should wait on the taped line on the floor until a stall is available.
- PBIS common area training will address this area and these procedures will be practiced and reinforced.
- Additional cleaning and sanitizing will be based on the approved Winnipeg School Division Custodial Services schedule

PBIS at École Luxton School



- École Luxton School is a Positive Behavioral Interventions and Supports (PBIS) School.
- We teach and regularly remind students about expectations in the hallways, stairs, bathrooms, lining up, recess and many other important safety aspects at Luxton.
- Students will follow PBIS guidelines in all areas of the school. This will support physical distancing and keep cohorts separate from one another.
- Students returning to Luxton will already be comfortable and familiar with many of the routines in our public spaces.

Recess



- Recesses will be staggered, and each class will remain together with their cohort.
- Entry and exit will be from their designated door.
- Each cohort will alternate in designated spaces, so that they have access at different recesses to our three designated areas that will be used during both recess and lunch;
the structure, the hard top and the field.
- Times for recesses will be flexible, and will occur between 10-11am and between 1:30-2:30 pm

Lunch Program



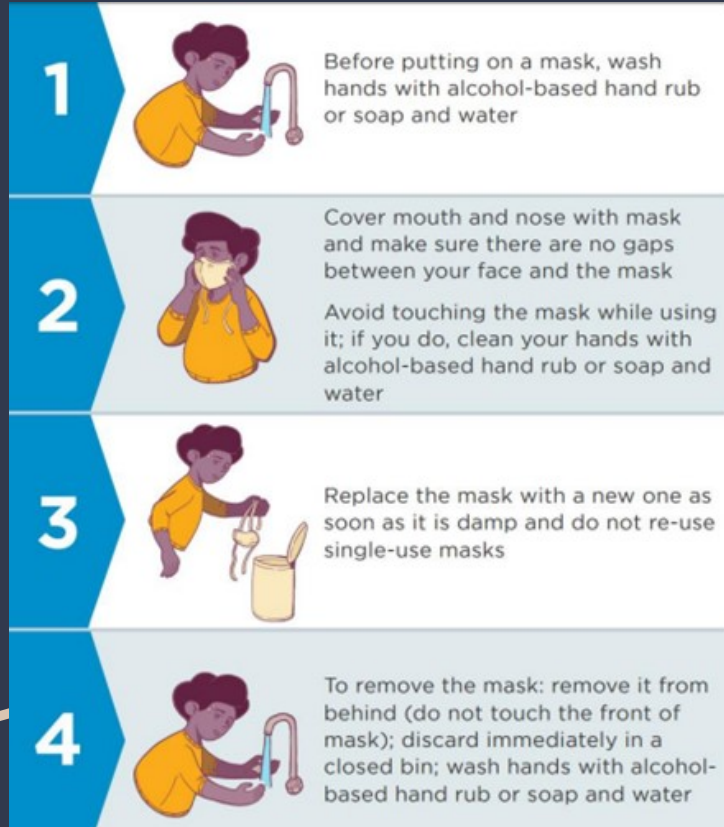
- Any student who wishes to be enrolled in the lunch program must register with Rita Legary as soon as possible.
- Rita can be reached at 204-589-4368 over lunch time. If you are calling at other times, a message will be forwarded to her.
- Lunch program students will remain in their same cohorts for lunch.
- Lunch program students will eat in their classrooms.
- In order to keep cohorts separated a staggered lunch and lunch recess schedule will be followed.
- During lunch recess students will remain in their cohort in one of our three designated play spaces; the hard top, the play structure or the field.

Going Home for Lunch



- Students who are going home for lunch will exit through their assigned door.
- Staff will welcome students back at their assigned doors promptly at 12:45 PM
- Students will sanitize hands upon entry.
- While waiting for entry there will be marked spacing 2 metres apart outside of the school.

Masks in Schools



- At this time non-medical masks are required in our school for students in Grades 4 to 6, as well as teachers, staff and visitors, when physical distancing of two metres is not possible.
- Parents and caregivers will decide whether younger students, grade 3 and under, should wear a mask.
- Families may choose to have students wear face shields in addition to masks. Face shields cannot be used as a replacement for a mask.

End of day pick up



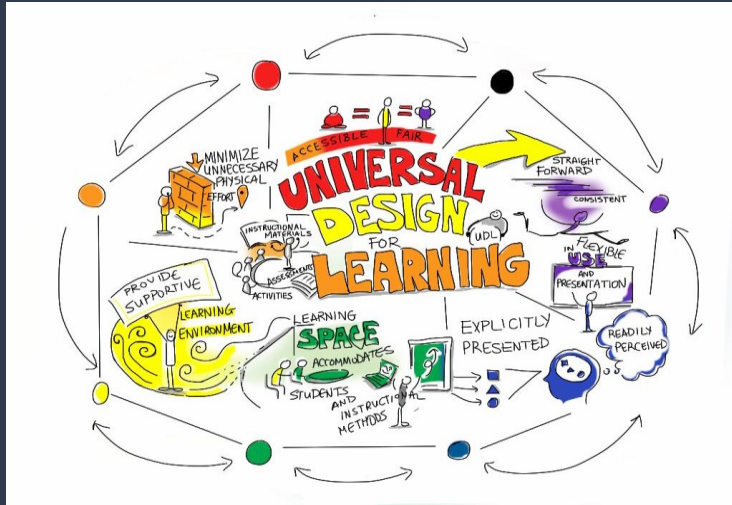
- Caregivers are asked to meet students outside of their designated doors, and to maintain physical distancing from others.
- N/K students and primary students will be closely monitored and handed off for pick ups
- Staff will be available at the doors for assistance.
- All students must be picked up promptly at 3:30 PM.
- The playstructure will not be available for students before and after school.

What happens if a child becomes ill at school?



- If a student develops symptoms at school they must go home immediately for the safety of others.
- Students who display symptoms will be removed from their classroom, given a mask if they do not have one, and will be isolated while being monitored by a staff member.
- You will be called to pick up your child immediately.
- Once you arrive, phone the school at 204-589-4368 and a staff member will walk your child out to meet you.
- Parents are required to contact their health care provider or Health Links at 204-788-8200 for direction on what to do next.
- Students who are awaiting test results are to remain at home until their results are known.
- A sick child can return to the school once it has been determined safe to do so by public health/healthcare provider.
- If a COVID-19 case within the building is determined by Public Health, the school will follow directives of Manitoba Public Health Authorities.

Learning



- We understand that due to the shift to remote learning in the Spring, many students experienced disruptions in their learning.
- All Winnipeg School Division teachers will utilize WSD assessment tools, observations, and professional judgement to determine strengths, challenges and next steps in student learning.
- Targeted instruction will be crafted to meet the learning needs of your children.
- The learning focus will be on literacy, numeracy and mental health.
- To support our learners we have a Guidance Counsellor, and a Resource Teacher who will work with classroom teachers to provide the best opportunities for learning.
- Our staff will do their best to foster collaboration in classrooms using all available resources while following all health recommendations.

Student Mental Health and Well Being



- COVID-19 has been tough on all of us. Student mental health and well-being will be talked about and monitored as students return to school.
- Staff will use a variety of strategies and activities to support and maintain mental health wellness.
- Ecole Luxton School will continue to be supported by Clinical Support Services (School Psychologist, School Social Work, Speech and Language, Occupational Therapy, Physiotherapy, and a Reading Clinician).

Increased Cleaning/ Disinfecting:



- Ecole Luxton School's team of custodians has been working very hard over the summer to make sure we are ready for a safe return.
- All high touch surfaces will be cleaned regularly according to WSD guidelines.
- All washrooms and classrooms will be cleaned regularly according to WSD guidelines.
- All classrooms will have hand sanitizer.

[illegible]

- Stay home if you are sick.
- Bring a water bottle.
- Wash your hands with soap multiple times a day (e.g. start and end of the day, when using washrooms, before eating, when they are dirty, after wiping your nose, etc.).
- Keep the recommended physical distance between yourself and others.
- No item sharing (food, water bottles, musical instruments, books, games, toys, etc.).
- Masks are required for grades 4 and up. Masks are encouraged for all others.
- Please make sure the school has up-to-date contact information including an email address. This helps us keep you up to date through School Messenger.

Helpful Links/Resources

WSD Pandemic Planning:

<https://www.winnipegssd.ca/Parents/PandemicPlanning/Pages/default.aspx>

WSD Pandemic Planning Framework:

<https://www.winnipegssd.ca/Parents/PandemicPlanning/Documents/WSD%20Framework%20for%20School%20Planning%20during%20pandemic%20WEB.pdf>

Homeschooling Information:

<https://www.edu.gov.mb.ca/k12/schools/ind/homeschool/index.html>

Return to School Information for Parents/Guardians

https://manitoba.ca/asset_library/en/covid/k-12-reopeningplan-guideforparents.pdf

Parent/Guardian FAQs

https://www.winnipegssd.ca/Parents/PandemicPlanning/Documents/parent_guardian_faq.pdf

Restoring Safe Schools

https://manitoba.ca/asset_library/en/covid/k-12-reopeningplan-guidance.pdf

Closing:



In closing, we want to say how excited we are to see our students and École Luxton School families. These guidelines are set to protect students, families and staff. We realize that some of these restrictions are not typically how things happen at school. We hope that we will continue to be Better Together, in new ways. We wish everyone a safe and exciting year of learning!

Joy Perrott

Principal

jperrott@wsd1.org

204-589-4368